



HILL COUNTY ELECTRIC NEWS & VIEWS

January 2025



1.877.394.7804  
hillcountyelectric.coop

New year & past accomplishments



Craig Gates
General Manager/CEO

As the calendar turns to a new year, many individuals take the opportunity to reflect on their personal goals and resolutions. At Hill County Electric (HCE), we also believe in taking a moment to celebrate our accomplishments, especially as

we embark on 2025. This past year has seen significant challenges with Verona as well as significant accomplishments by our team.

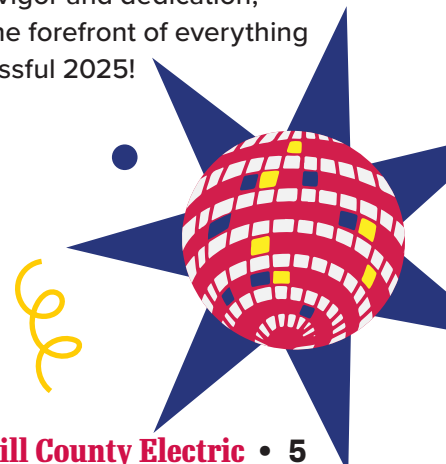
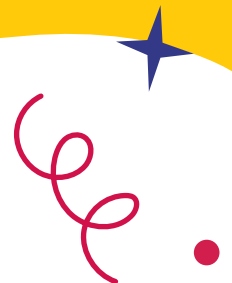
In 2024, HCE successfully rolled out several new systems that are set to improve our operations. First among these is a new mapping & staking system designed to integrate into our billing software system. This integration will provide significant gains in efficiency for the future. Training is essential when it comes to adopting new software. Our team committed to learning the new software programs and attended many training sessions on it.

These upgrades are complemented by an integrated outage management system that offers features not previously available on our old platform. Members who have accessed our outage management page via our website will notice a refreshed look and enhanced functionality.

In addition to these advancements, HCE has continued to prioritize the reliability of our infrastructure. Throughout 2024, we conducted thorough testing on over 4,700 poles as part of our ongoing pole testing program. Since the introduction of this initiative in 2017, we have noted a significant decrease in downed poles during storms, a testament to the program's success. This proactive approach ensures the safety and reliability of the electric service we provide to our members.

Moreover, over the last five years we addressed another critical area by replacing over 60 miles of degraded underground cable that had been the source of outages for our members. This significant infrastructure investment is a vital step toward ensuring consistent and reliable electric service as we look to the future.

As we embark on this new year, we are excited about the enhancements we've made and the path ahead. We look forward to serving our members with renewed vigor and dedication, keeping your needs at the forefront of everything we do. Here's to a successful 2025!





New Year's Word Search

J A N U A R Y F R I E N A C E
F R I E N D S Y A S R I L A H
N E Y S E R T I E M O W B L C
B S I L Y F A E N E I Y A E O
N O C R N V N V E Y D L B N U
A L D C L O C K L T I E Y D N
R U V E W M I D N I G H T A T
V T O A S T W S N O L Y I R D
G I A N I N G S E V E U A R O
C O N F E T T I T M I N G S W
R N O L C E L E B R A T I O N
A J A N U E L V E I M K E R A
Y P A R T Y H A A P Y S E V W
N E W Y E A R C L O K S O R Y
S H A P P Y E B A L L R E S O

BABY
BALL
CALENDAR
CELEBRATION
CLOCK
CONFETTI
COUNTDOWN
EVE

FAMILY
FRIENDS
HAPPY
JANUARY
MIDNIGHT
NEW YEAR
NOISEMAKER
PARTY

RESOLUTION
TOAST



CRAYONSANDCRAVINGS.COM

OUR PAY-BY-PHONE NUMBER HAS CHANGED!

Save the new number and keep your payments hassle-free.

HCE PAYMENT OPTIONS



Online Bill Pay



Mail Your Payment



Paperless Billing



Auto-Pay



E-Check



SmartHub®



Night Drop



Pay-by-Phone



THOUSANDS IN SCHOLARSHIPS AWARDED EACH YEAR!

FIRST DEADLINES: JAN 15TH!

Past Scholarship Winner | Angela Saint

BEST BETS FOR

Winter Savings

Energy consumption spikes during winter months as we spend more time indoors and heating systems work overtime. You can help reduce demand and strain on the electric grid by conserving during peak energy times. Reducing energy use will also help lower your energy bills.

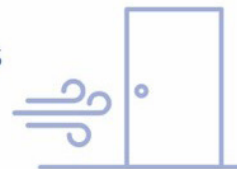
UNPLUG WHEN POSSIBLE



Turn off unnecessary lights and electronics when you aren't using them.

ELIMINATE DRAFTS AND AIR LEAKS

Seal air leaks and drafts around windows and exterior doors.



USE APPLIANCES WHEN ENERGY DEMAND IS LOWER

Run large appliances like clothes washers, dryers and dishwashers early in the morning or before you go to bed.



MAINTAIN HEATING EQUIPMENT

Maintain your heating system by replacing dirty, clogged filters and scheduling an annual inspection for necessary maintenance.



LOWER THE THERMOSTAT

Home heating accounts for a large portion of energy consumption. Adjust your thermostat to the lowest comfortable setting (68 degrees or lower).



Swap and Shop

Welcome to our Swap and Shop! Feel free to post and find classifieds from other members! Ads submitted online are usually added within 2 to 3 business days.

Due to print deadlines and space available, some ads may appear in the next month's magazine.

1984 Steiger Pather IV

Panther IV series model KM-360. Has 855 Cummins Motor with 360 Horse Power. SST 110 transmission, radial tires, new batteries, runs excellent. Asking \$29,500 OBO. Call 406.353.4466.

Flex coil sprayers

Two Flexi coil sprayers S67 XL Models, 1500 gallon tanks. Rare 60ft cultivator, 1984 Morris M CP-760 Magnum, comes with harrows. Asking \$7,500. Call 406.262.4466.

Rare 60ft Cultivator

Rare 60ft cultivator, 1984 Morris M CP-760 Magnum, Harrows come with. Asking \$7500, call 406.262.4466.

120 Ft Booms

120 ft booms. One is good and one for parts. Comes with monitor to run it. Asking \$4,300 for both. Call 406.262.4466.

Hamburger For Sale

In 2lb packages, \$4 per pound. Call 406.301.4035.

Set of 4 stock wheels*

Set of 4 stock wheels from 2016 Dodge Ram pickup truck. Very good condition \$700 OBO. Call 406.357.2891.

Boat, Motor, Trailer and Motorcycles For Sale

15 ft. boat, motor & trailer 2004 Harley Davidson Fat Boy (5000 actual miles) 2013 Harley Davidson v-Rod 2012 Suzuki V-Strom (5000 actual miles) Call 406.399.4949

Big Foot Camper

Big Foot 10 FT Camper with A/C, toilet, refrigerator and bed for sale, call 406.301.4035.

Craftsman 2 stage snowblower with tire chains

Craftsman 28-inch electric start, 2 stage snowblower with tire chains. Asking \$500 obo, call 406.395.4581.

Tubular Aluminum Table

Tubular aluminum inversion table, lightly used. Asking \$50. Call 406.395.4581.

Wanted 1955-1959 GMC or Chevy Parts

1955-1959 GMC or Chevy parts. Pickup parts or whole pickup. Call 406.326.2287.

Early 1970's Disassembled Triumph Spitfire*

Early 1970's Disassembled Triumph Spitfire. Call 406.372.3161, Asking \$2,500 OBO.

Wheat Straw Bales

Small square wheat bales, our of conventional combine. \$5.00 per bale, located just a few miles north of Havre, MT. Limited quantities available. Please call or text 406.230.2281, email: noneckfarms@gmail.com or on Facebook at Twyla Knudson.

Cattle Squeeze Chute

Powder River Squeeze chute. Asking \$2,000 Call 406.301.4035.

Trailer Needed

Trailer needed for hired men. Call 406.930.2276.

Flatbed Trailer*

48' by 102" flatbed trailer, 2013 East, asking \$23,500, Call 406.980.0789.

Town and Country Van Parts Car

1997 model, \$500, you tow it. Call 1.406.355.4123 for more information.

2015 GMC Sierra 3500HD Crew Cab

Engine will need to be replaced, has 230,705 miles. Asking \$5,000. Call 406.394.2879.

Free to Established Aquarium

Free to a well established aquarium Corydora catfish, 6 albinos and many gold lazars. Call 406.547.2266

Case 446 tractor and more

1980 collectible Case 446 tractor with hydro and 46" mower. Good tires, nice paint, always inside, 16hp, asking \$1,400. 1950's 7up pop refrigerator cooler out of old grocery store, all original. Asking \$550. Firebird snowflake wheels, \$400. Antique 1930's 3 divided gas truck bulk tank. Has rear compartment for barrels and grease buckets. Call 406.374.2458 ask for Mike.

1985 MacGreror Jetboat*

1985 MacGreror Jetboat, call 406.326.2211.

2016 Ford F350 Super Duty Crew Cab*

HCE/Triangle Fleet #334. 161,136 miles. Asking \$20,000. Call Brian at 406.394.2879.

2015 GMC Sierra SLE 2500*

HCE/Triangle Fleet #323. 161,136 miles. Asking \$20,000. Call Brian at 406.394.2879.

2016 GMC Sierra SLE 3500*

HCE/Triangle Fleet #325. 169,618 miles. Asking \$20,000. Call Brian at 406.394.2879.

**Denotes photo available on website*

Swap & Shop is a classified advertising section of the Triangle Communications and Hill County Electric websites and newsletters. It is maintained as a service to customers and communities wanting to buy, sell and announce non-commercial items. To have an ad included, simply enter all the pertinent information on the online form. An administrator will review the information within two business days and if approved, the ad will then appear. It will stay online for 60 days unless you notify us to remove or change it. It will also appear in any of the newsletters printed during that 60 day window. Triangle reserves the right to abbreviate ads and if the section is full, we will display ads on a first come, first-served basis. If you're unable to enter your ad online you may mail or e-mail it to us using the contact info inside the front cover of this magazine. Happy swapping and shopping.