



HILL COUNTY ELECTRIC NEWS & VIEWS

November 2024



1.877.394.7804  
hillcountyelectric.coop

October is a significant month for cooperatives across the nation, as it marks National Cooperative Month, a time to reflect on the values that unite us as a community and the impact we can achieve when we work together. This observance is more than a mere celebration of the cooperative model; it's an opportunity to reaffirm our commitment to the cooperative principles that guide us in our mission: voluntary and open membership, democratic member control, member economic participation, autonomy and independence, education, training and information, cooperation among cooperatives, and concern for community.

The Foundations of Cooperative Principles: A Commitment to Community

HCE is proud to provide yearly support to our area food banks, fire departments, and schools. These contributions go far beyond their monetary values; they represent a commitment to supporting our members who are supporting each other.

Looking Ahead: A Vision for Community

As we celebrated National Cooperative Month, the principles that guide our activities are not just theoretical— they are practical drivers in our daily lives. Supporting vital organizations through volunteerism, making yearly donations, and living and working alongside our members are not just responsibilities; they are privileges.

Last But Not Least: VERONA

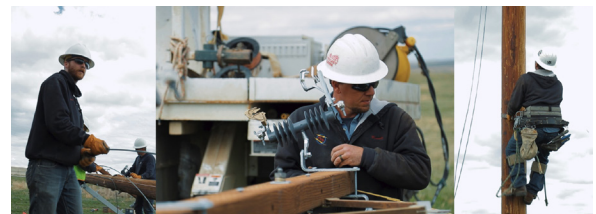
Our team did a fantastic job and worked so hard during this time that we accomplished our goal a day earlier than planned. A GREAT BIG THANK YOU to the TEAM! I also want to THANK everyone down south that was affected by the Verona substation work. You were so kind and had patience with us, it is truly remarkable what great members we have, sincerely, THANK YOU!!



Craig Gates
General Manager/CEO

Celebrated National Cooperative Month

As we celebrated National Cooperative Month, the principles that guide our activities are not just theoretical— they are practical drivers in our daily lives. Supporting vital organizations through volunteerism, making annual donations, and living and working alongside our members are not just responsibilities; they are privileges.





WIN A TRIP TO WASHINGTON DC!

Tour Dates: June 14-21, 2025

Apply by Dec 1, 2024

Visit hcelectric.com/youthtour for more info.

Open to HCE Member Dependents who are currently a Sophomore or Junior.

HOLIDAY CLOSURES

Thanksgiving

Thursday, November 28th
Friday, November 29th

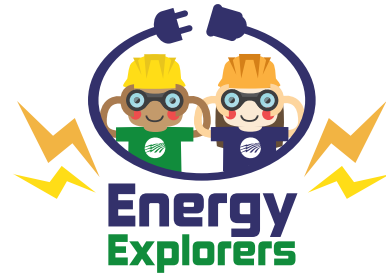
Christmas

Tuesday, December 24th
12PM to 5PM
Wednesday, December 25th

New Year's Day

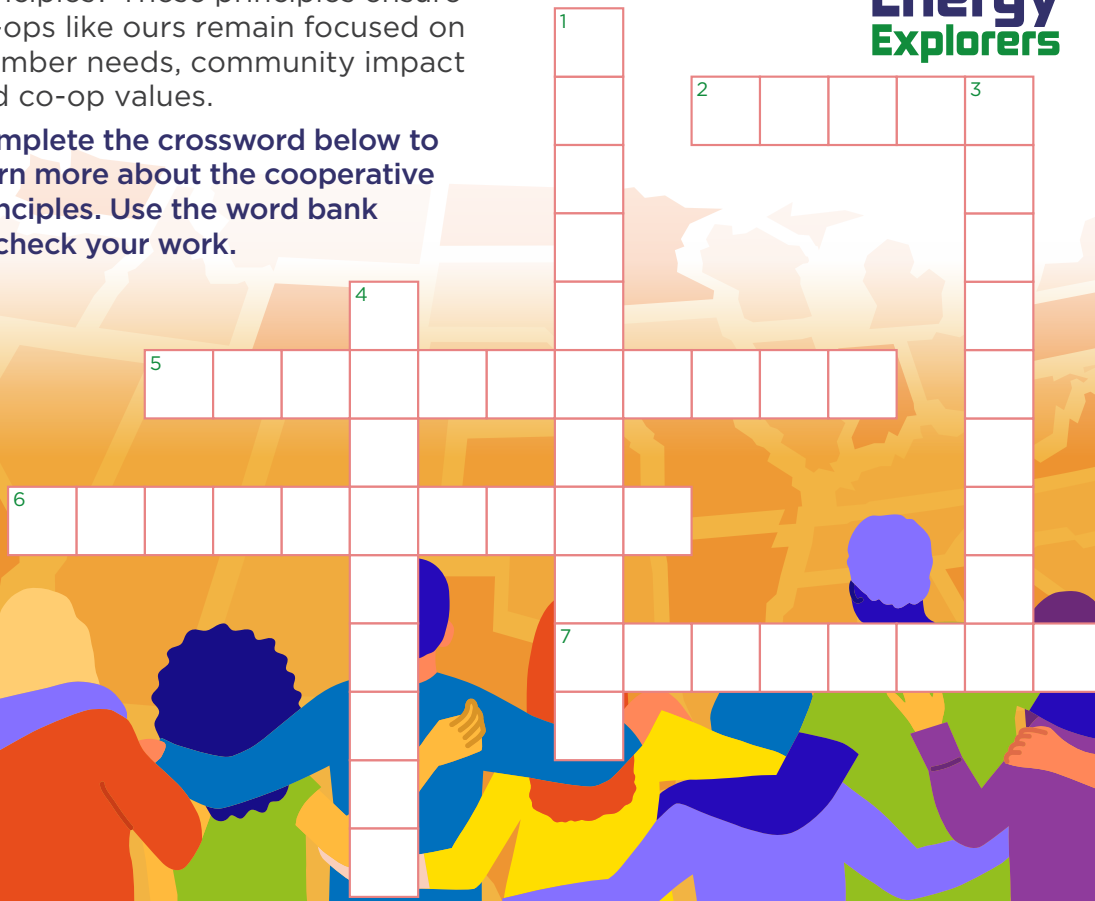
Wednesday, January 1st

SEVEN COOPERATIVE PRINCIPLES CROSSWORD PUZZLE



Did you know electric co-ops are guided by a set of seven cooperative principles? These principles ensure co-ops like ours remain focused on member needs, community impact and co-op values.

Complete the crossword below to learn more about the cooperative principles. Use the word bank to check your work.



ACROSS

- Cooperation Among Cooperatives: Co-ops _____ and learn from other co-ops.
- Autonomy & Independence: Co-ops are _____ and can operate on their own.
- Member Economic Participation: Members _____ money to ensure the co-op runs smoothly.
- Open & Voluntary Membership: Co-op membership is open to _____.

DOWN

- Concern for Community: Co-ops give back to their local _____ to help them thrive and grow.
- Education, Training & Information: Co-ops focus on _____ to ensure employees and members have the info they need.
- Democratic Member Control: Members get to make _____ about the co-op.

ANSWER KEY

2 ACROSS: SHARE 6 ACROSS: CONTRIBUTE 7 ACROSS: EVERYONE 5 ACROSS: INDEPENDENT
 4 DOWN: DECISIONS 1 DOWN: COMMUNITIES 3 DOWN: EDUCATION

Swap and Shop

Welcome to our Swap and Shop! Feel free to post and find classifieds from other members! Ads submitted online are usually added within 2 to 3 business days.

Due to print deadlines and space available, some ads may appear in the next month's magazine.

**Denotes photo available on website*

1999 GMC 3500HD 2WD Dually*
6.5L V-8 turbo diesel engine with 195HP. Utility body featuring a generator, rack, lockable tool boxes, Maintainer Crane and built-in hydraulic leveling/support jacks. Includes ability to plug in additional external hydraulic accessories. Crane has a 21,000 ft/lb rating, so can handle 5,000 lb when vertical. 1,000 lb at full 21' horizontal extension. Heavy duty 19.5" wheels, 2 full spares. Odometer 207,235.

Hamburger For Sale
In 2lb packages, \$4 per pound. Call 406.301.4035.

Set of 4 stock wheels*
Set of 4 stock wheels from 2016 Dodge Ram pickup truck. Very good condition \$700 OBO. Call 406.357.2891.

Boat, Motor, Trailer and Motorcycles For Sale
15 ft. boat, motor & trailer
2004 Harley Davidson Fat Boy (5000 actual miles) 2013 Harley Davidson v-Rod 2012 Suzuki V-Strom (5000 actual miles). Call 406.399.4949

Big Foot Camper
Big Foot 10 FT Camper with A/C, toilet, refrigerator and bed for sale, call 406.301.4035.

Craftsman 2 stage snowblower with tire chains
Craftsman 28-inch electric start, 2 stage snowblower with tire chains. Asking \$500 obo, call 406.395.4581.

Tubular Aluminum Table
Tubular aluminum inversion table, lightly used. Asking \$50. Call 406.395.4581.

Wanted 1955-1959 GMC or Chevy Parts
1955-1959 GMC or Chevy parts. Pickup parts or whole pickup. Call 406.326.2287.

Early 1970's Disassembled Triumph Spitfire*
Early 1970's Disassembled Triumph Spitfire. Call 406.372.3161, Asking \$2,500 OBO

Wheat Straw Bales
Small square wheat bales, our of conventional combine. \$5.00 per bale, located just a few miles north of Havre, MT. Limited quantities available. Please call or text 406.230.2281, email: noneckfarms@gmail.com or on Facebook at Twyla Knudson.

Trailer Needed
Trailer needed for hired men. Call 406.930.2276.

Flatbed Trailer*
48' by 102" flatbed trailer, 2013 East, asking \$23,500, call 406.980.0789.

Case 446 tractor and more
1980 collectible Case 446 tractor with hydro and 46" mower. Good tires, nice paint, always inside, 16hp, asking \$1,400. 1950's 7up pop refrigerator cooler out of old grocery store, all original. Asking \$550. Firebird snowflake wheels, \$400. Antique 1930's 3 divided gas truck bulk tank. Has rear compartment for barrels and grease buckets. Call 406.374.2458 ask for Mike.

2015 GMC Sierra 3500HD Crew Cab
Engine will need to be replaced, has 230,705 miles. Asking \$5,000. Call 406.394.2879.

Free to Established Aquarium
Free to a well established aquarium Corydora catfish, 6 albinos and many gold lazars. Call 406.547.2266.

2016 Ford F350 Super Duty Crew Cab
Has 161,136 miles. Asking \$20,000. Call Brian at 406.394.2879 for more information.

Swap & Shop is a classified advertising section of the Triangle Communications and Hill County Electric websites and newsletters. It is maintained as a service to customers and communities wanting to buy, sell and announce non-commercial items. To have an ad included, simply enter all the pertinent information on the online form. An administrator will review the information within two business days and if approved, the ad will then appear. It will stay online for 60 days unless you notify us to remove or change it. It will also appear in any of the newsletters printed during that 60 day window. Triangle reserves the right to abbreviate ads and if the section is full, we will display ads on a first come, first-served basis. If you're unable to enter your ad online you may mail or e-mail it to us using the contact info inside the front cover of this magazine. Happy swapping and shopping.